

STATEMENT OF QUALIFICATIONS

Construction Management
Experience



aetherdb's
elemental design build solutions

www.aetherdb's.com
877.637.9470



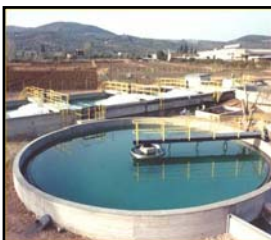
With engineering, construction, management, and custom fabrication capabilities and expertise, **aether dbs** brings world class, reliable, cost-effective solutions to our client's air, water, energy, infrastructure, and environmental projects. **aether dbs** specializes in the engineering and installation of sustainable solutions and modular process systems for clientele with construction management needs, and delivers results with our extensive experience and innovation. Our engineering and construction staff work hand-in-hand to ensure your projects run smoothly from beginning to end. Whether it's initial planning, system and site design, or installation and construction, **aether dbs** makes sure that your projects are completed on-time, within budget, and deliver the results you expect.



aether dbs brings the essential elements of people, talent, technology, and action together to deliver value for your complex problems. We deliver quality services, minimize costs, accelerate schedule, and work safely. We manage and monitor every item on your project's critical path and orchestrate the hundreds of components, items, suppliers, and services required to complete the job.



Furthermore, our turnkey solutions provide our clients with a single point-of-contact, mitigating subcontractor risks and minimizing field changes. The single point of contact makes it easy to keep you informed with any detail of the project. All of which result in greater savings and fewer headaches for you.



Every project **aether dbs** undertakes has environmental impacts. We are diligent in managing ours, our clients, and our earth's resources in an environmentally conscious manner and constantly seek out ways to increase sustainability in every client engagement.



aether dbs is flexible with various contract delivery mechanisms and comfortable with traditional, risk-shared, or alternative project delivery contracts. We realize our client's needs are complex and crucial for efficient business operations. It is always our goal to exceed our client's expectations and we invite you to realize success with **aether dbs** on your next critical project.



Drawing on our recent experience, Aether knows the intricacies of performing engineering and construction management for construction projects. We always work for your best interests, looking for potential ways to streamline the design process while still meeting all inherent requirements.

We have solid experience performing engineering, project management, construction management, and oversight for construction projects. The following projects highlight our recent experience:

Water Treatment Plant Design-Build, Linde Gas - Lemont, Illinois

Aether has provided design-build services for a high-quality water treatment plant and the associated building. The water treatment plant will process boiler feed water for the new adjacent Linde Gas hydrogen plant, which services the Citgo Oil Refinery. Construction of the facility was completed in 2009.

Pepsi Distribution Facility Design/Build - Massillon, Ohio

After completing the initial Phase I Environmental Site Assessment, Aether was responsible for the design and construction management of changes to an existing building for use as a regional distribution center. Project activities included interior building modifications, relocating the loading docks, adding a gatehouse and secure fencing, and designing and building new asphalt parking lot. Critical to the projects was the design of stormwater systems that would provide storage for onsite runoff, calculated to hold the 100 year, 24 hour storm. This included detention ponds, catch basins, stormwater piping, and inlet and outlet structures.

Family Tradition Foods - Tecumseh, Ontario, Canada

Designed and built an upgraded wastewater treatment system, using as much existing equipment as possible. Upgrade consisting of an equalization tank, a DAF unit, instrumentation, and piping reconfiguration. Prepared site, including leveling DAF area and layout arrangement. Provided on-site construction manager to ensure project proceeded smoothly. Provided and installed equipment, including DAF and DAT, 10,000-gallon polyethylene equalization tank, new pH probe and controller, caustic feed system, coagulant feed system, new flow meter and control valve. Oversaw modification of electrical and mechanical system. Tested components of all systems and made one-day crossover. Prepared operation maintenance manuals for all equipment.

Wastewater Treatment System, PepsiAmericas - Riviera Beach, Florida

Aether was the Project Manager for the design-build of an industrial wastewater pretreatment system for pH adjustment of various wastewater streams. During the project Aether also managed the abatement of asbestos-containing materials (ACM) related to damaged vinyl floor tile (VFT) and mastic in the facility buildings.

Waste Management Inc., Leachate System Design/Build - Zeeland, MI

Design-build of a leachate collection treatment system to remove arsenic from the leachate at Autumn Hills Landfill by oxidation and precipitation. The system consisted of a



lift station, rapid mix tanks for hydrogen peroxide and ferric sulfate addition, a lamella clarifier with rapid and floc mix vessels, associated chemical feed systems, sludge storage and transfer systems, instrumentation and controls system, mechanical systems, weather protection, and structural systems.

Construction Management, Pepsi Americas - Twinsburg, OH



Due to company growth, Pepsi Americas decided to add on to an existing warehouse with a new 80,000 square-foot building. Aether was chosen to lead the overall project as the owner's representative, including construction management and administration of this approximately \$10 million project.

Aether served as the construction manager and owner's representative on site during the construction project. In this capacity, Aether was responsible for overseeing the site daily, generating reports on work progress, coordinating weekly construction meetings with the general contractor, architect, and Pepsi plant management, and driving the project schedule to completion. The company was also responsible for tracking costs, generating purchase orders and processing invoices. Aether also participated in construction management services as necessary and coordinated efforts with the operating plant project team members.

Construction Management, St. Louis River / Interlake / Duluth Tar Site - Duluth MN

Aether was retained to provide construction and project management services for this Response Action (RA), which has a budget of about \$60 million. The site is on the St. Louis River, approximately four river miles upstream of Lake Superior. The site includes approximately 255 acres of land and river embayments, wetlands, and shipping slips. The aquatic portion of the site is approximately 90 acres. Approximately 800 people live within one mile of the site. Onsite sediments are



contaminated with Polycyclic Aromatic Hydrocarbons (PAHs). The ROD requires a combination of dredging and in situ capping along with the construction of an underwater contained disposal facility. Aether is serving as the representative on site during the RA. Aether is also responsible for overall project construction management services, which includes constructability reviews, pre-qualification and bid-phase services for RA Contractors, and on-site construction administration and management during the Response Actions.

As project Construction Manager, Aether prepares overall project cost budgets, schedules, and scope documents to ensure proper coordination with Regulatory Agencies and project team members. During RA activities, Aether is responsible for the daily oversight of the RA Contractors and reports on the daily progress of the work. Aether also participates in construction management services as necessary during the Response Actions.



Aether reports directly to the Project Director, and coordinates efforts with the other project team members.

The project is currently in the second year of construction, which will take place over the next 2 to 3 years (including restoration). As Project Managers, our objective is to control and mitigate our client's project-related risks to preserve their rights for cost recovery.

Project Management, PCB Treatment Inc. (PTI) - Kansas City MO & KS

Aether was retained to act as the overall Project Technical Manager and Quality Assurance firm for a \$35 million Removal Action. Specifically, AETHER managed the removal and dismantlement of two (2) PCB impacted buildings located in Kansas City, Missouri and Kansas City, Kansas.

The Aether project role was to provide overall project management and on-site construction management for multiple subcontractors, schedule and budget control, and liaison with the USPEA and other regulatory agencies.



Both buildings have been successfully dismantled. The building debris and materials were disposed of properly following all local, state, and federal regulations. As Project Managers, our objective is controlling and mitigating the Group's project-related risks.

Construction Management, Dist Tech and Great West Casualty - Kirby, PA



Aether acted as general contractor and construction manager for this approximately \$3 million project to construct a shoring wall, excavate and treat contaminated soil from a toluene spill, and pump and treat groundwater contamination. Aether was responsible for schedule and budget control for multiple subcontractors, permit applications, and liaison with state and local regulatory agencies

First, the area's steep slope had to be stabilized. Aether developed a unique shoring wall construction technique for the project. This involved a thorough geotechnical investigation and the design of a mechanical stabilization system. A top-down shoring system with an anchored concrete shoring wall and soil anchors was installed. Excavation of the contaminated soil also required removal of the existing impacted fill soils above the water table in conjunction with the shoring system. Because pure toluene is a specially regulated hazardous waste, soil could not be hauled away; instead, approximately 3,000 cubic yards of soil were treated on site with a thermal desorption remedy.

To address the groundwater contamination, a pump and treat system with an air stripper was used. Backfilling and site restoration were then completed. Treated soil and structur-



al fill were used to cover the shoring wall. The entire area was then seeded and mulched. The client was released from any further obligation to the site.

Wastewater Treatment Plant Design/Build, Alliant Energy, (Interstate Power & Light) - Ottumwa, IA



Aether acted as the general contractor and construction manager for the design-build of a wastewater treatment system at the Alliant Energy power plant. Aether installed a pre-fabricated building to house the treatment system, and provided an on-site construction manager throughout the project to coordinate multiple subcontractors. The project included the installation of an underground 3,000 gallon fiberglass tank, pumps, electrical, excavation, and structures. Other responsibilities included preparing the design documents and permit applications, specifying all materials and equipment, and bid evaluation.



As you can see from our representative experience, while working as engineer or construction manager, we have participated in numerous projects, negotiated with both State and Federal Regulatory Agencies, and coordinated with other contractors and consultants.

Solid construction project management skills are what Aether was founded on. We know what it takes to successfully implement civil and environmental projects the first time, on time, and on budget. As indicated previously, we have implemented solid project management plans and provided project management services for numerous projects of all sizes. We have specific experience developing work plans, design documents, construction documents, and implementing these plans in the field. Specifically, we have provided work plan preparation, including project work plans, engineering, drawings and specs, design reports, contingency plans, health and safety plans, residuals management plans, transportation and disposal plans, and stormwater pollution prevention or spill prevention, control, and countermeasures plans.

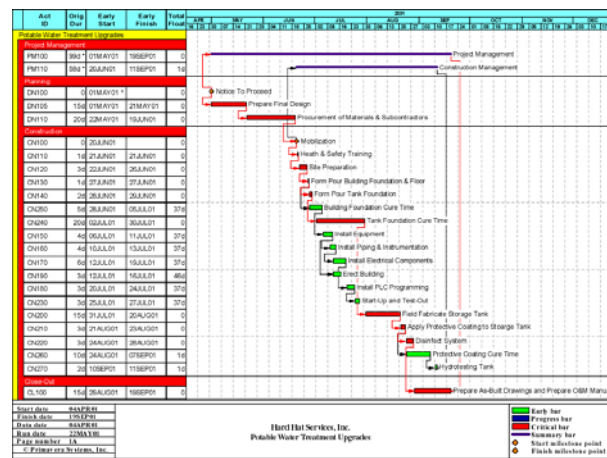
Construction Management

As successful construction managers, we seamlessly tie together the varied, critical elements of a project. At Aether, we take great pride in our ability to manage large multi-task projects. The larger and more complex the project, the more critical is our overall management function. Aether forms highly skilled and experienced teams capable of organizing, scheduling, and integrating all the individual elements of a project. Specifically, we roll out an integrated project controls system, materials procurement and subcontracting system, and we utilize technology to increase our efficiencies. We commonly use Primavera® Project Planner® (P3®) software to create and maintain main project and individual component schedules; Excel® spreadsheets and accounting software for creating and maintaining cost tracking data; and use of Adobe® Acrobat® for creating portable display files, so that all members of the project team can receive and review documents and reports. Efforts of all our project team members are skillfully coordinated and managed so that the project budget, schedule, and technical quality are on track at all times.

This team approach:

- Establishes priorities
- Focuses on the overall picture
- Resolves conflicts early
- Identifies issues before they become problems
- Helps customers maintain steady control of the project and its many elements

On major projects, the effort frequently involves a wide variety of participants, including project team personnel, design engineers, contractors, subcontractors, suppliers, state and federal agencies, and public



interest and community groups. Our integrated project management system organizes the full range of services necessary for successful project implementation, and creates an easily accountable system to respond to client demands, from the initial planning phase through site preparation and construction, to site restoration and project close-out.

Bid Phase Assistance

Preparing a tight SOW for construction activities on each project is critical. Aether will prepare the necessary bid documents, review bid documents, bid packages and offer recommendations and solutions. Specifically we will be involved with:

- Preparing independent cost estimates
- Value engineering/constructability review and suggesting cost savings
- Reviewing and preparing bid documents
- Evaluating bids and contract documents
- Periodic project schedule review and revisions
- Contractor and subcontractor proposed cost review and evaluation

Contract Administration and Management

A wealth of experience in design, construction, and construction project management has made us acutely aware of what it takes to complete a project successfully in the field. As a contractor, we also know what types of issues are critical to resolve prior to mobilization. We make certain that all contracts and subcontracts are clear in their scope and pricing, and that the terms and schedule are well defined. Administering contracts and managing the risks associated with the contracts are paramount to any successful construction project. By proactively planning and implementing integrated project controls, we stay ahead of potential conflicts and make certain that we know about them before they happen.

We ensure that all active contracts are tightly managed, so that project controls and procedures are maintained, and so there are no conflicts without resolutions. We respond in a timely manner to requests for clarifications and provide rapid resolution of critical project issues. As part of our overall project management function, the following contract administration tasks will be performed:

- Initiate and control weekly progress meetings
- Contractor oversight as owner's representative on site
- Schedule monitoring and milestone tracking
- Project cost tracking and control
- Shop submittal and documentation review
- Contract management to avoid delays
- Application for payment review
- Change order request review
- Respond to requests for clarification or requests for substitutions
- Claims avoidance/mitigation



We provide CQA services for various clients, including implementation of site-specific CQA plans, oversight, inspection, documentation, and certification that project requirements have been met.

We have provided these services for various clients, including the U.S. Air Force, Westinghouse, Waste Management, U.S. Army Corps of Engineers, National Guard Bureau, and various PRP Groups and Industrial clients. Our experience in all aspects of development and implementation of work at CERCLA sites makes us uniquely qualified to provide air-tight documentation for CQA services. With licensed Professional Engineers on staff, we also provide the technical expertise to respond to issues as they arise.

Specifically, we have been responsible for:

- Sample collection, documentation, analyses and reporting, including proper COC documentation and data validation procedures
- Inspection of multiple project installations and constructions, including demolition, staging, loading vehicles, transporting, air emissions, storm water discharges, backfill compaction, to ensure compliance with the agency-approved work plans
- Oversight of subcontractors and as owners-representative on-site, to ensure general good work practices and compliance with all applicable project documents and contracts
- Documentation to demonstrate compliance with project and contract requirements, so that at any point in the project, and when project is complete, there are no questions about what was done or how

Our CQA personnel are trained in the latest quality control procedures, and we pride ourselves on the training and experience that each of them have. We have been trained in the U.S. Army Corps of Engineers' 3-phase quality control system, which includes pre-construction, active construction, and post-construction quality control procedures. In addition, we provide site-specific training for our selected personnel, based upon the types of CQA services we will be providing.

